
DOLI Digital minilab (Small LCD panel)

Trouble shooting

- **Error indication on the LCD**
- **Mechanical failure**
- **Software failure**



Catalogue

Catalogue错误! 未定义书签。

Chapter 1 Error indication on the LCD1

 §1.1 developer level1

 §1.2 bleach level1

 §1.3 stabilizer level2

 §1.4 developer reg.low level2

 §1.5 bleach reg.low level3

 §1.6 stabilizer reg.low level3

 §1.7 waste full4

 §1.8 photo preparation failure4

 §1.9 paper not loaded4

 §1.10 tape release failure5

 §1.11 separator blocked6

 §1.12 twister timeout6

 §1.13 no cassette7

 §1.14 starting system please wait!7

 §1.15 run out of paper8

 §1.16 no connection with master8

 §1.17 display failure9

 §1.18 tape not ready9

 §1.19 exposer overheat10

 §1.20 LCD screen blocking11

 §1.21 Linux system stop to boot at “#...”11

Chapter 2 Mechanical failure12

 §2.1 Paper jam at cutter12

 §2.2 Paper jam at backprinter12





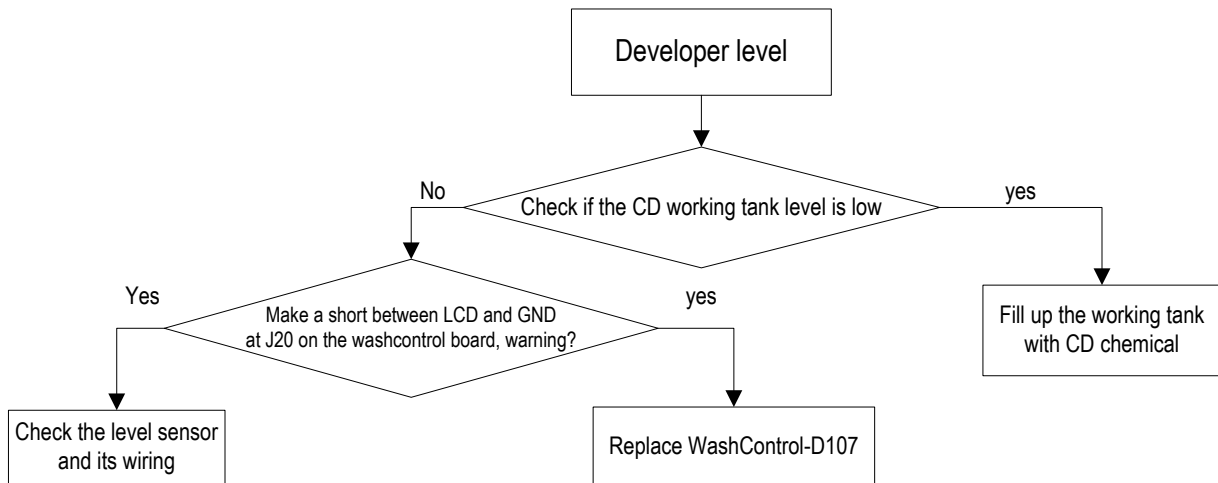
Troubleshooting

§2.3	paper jam in raiser rack	13
§2.4	Paper jam in racks	13
§2.5	Paper jam in dryer rack	14
§2.6	Cutter doesn't work normally	14
§2.7	Paper stays on platform	15
§2.8	Paper jam in divider	15
§2.9	Photo come out not dry	16
§2.10	Photo out of center and cannot be corrected by cassette offset adjustment	16
§2.11	Photo coming out not straight	17
§2.12	Corner bending	18
§2.13	Scratches on photo	18
§2.14	Sorter doesn't sort photo on time	19
<i>Chapter 3 software failure</i>		20
§3.1	can't connect to printer	20
§3.2	format list is not selectable	20
§3.3	Language abnormal	21
§3.4	Hasp not found	21
§3.5	Pictures are black in Istudio	22
§3.6	Pictures are distorted in Istudio	22
§3.7	Language error in maintenance software etc.	23
§3.8	Qmonitor software cannot be run	23
§3.9	Fail to make linux retoration	24
§3.10	Linux freezes frequently	24
§3.11	Photo full of color noise	25
§3.12	White prints	25
§3.13	Black prints	26
§3.14	Printing hanging up	26

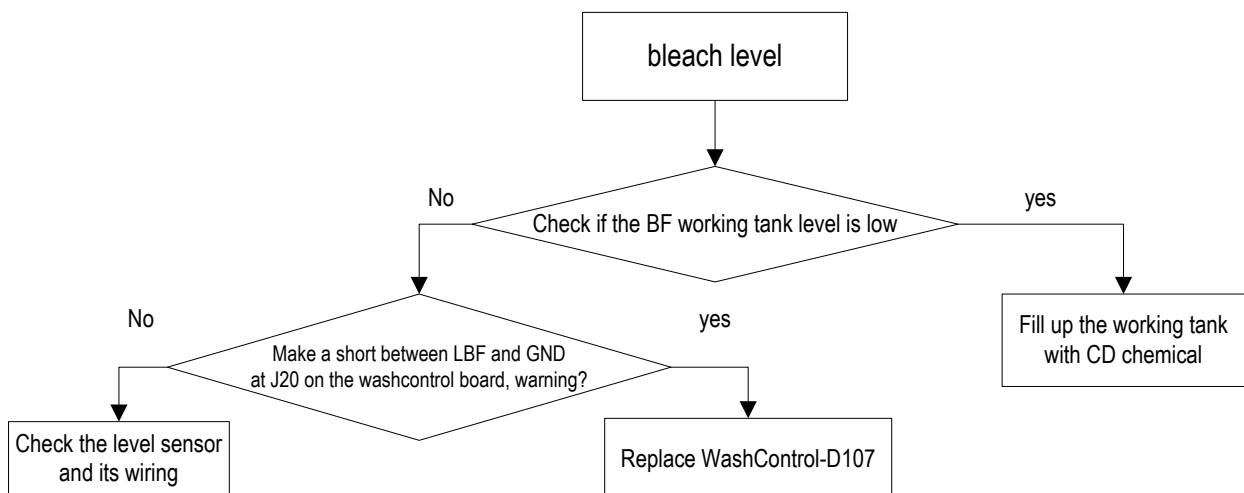


Chapter 1 Error indication on the LCD

§ 1.1 Developer level

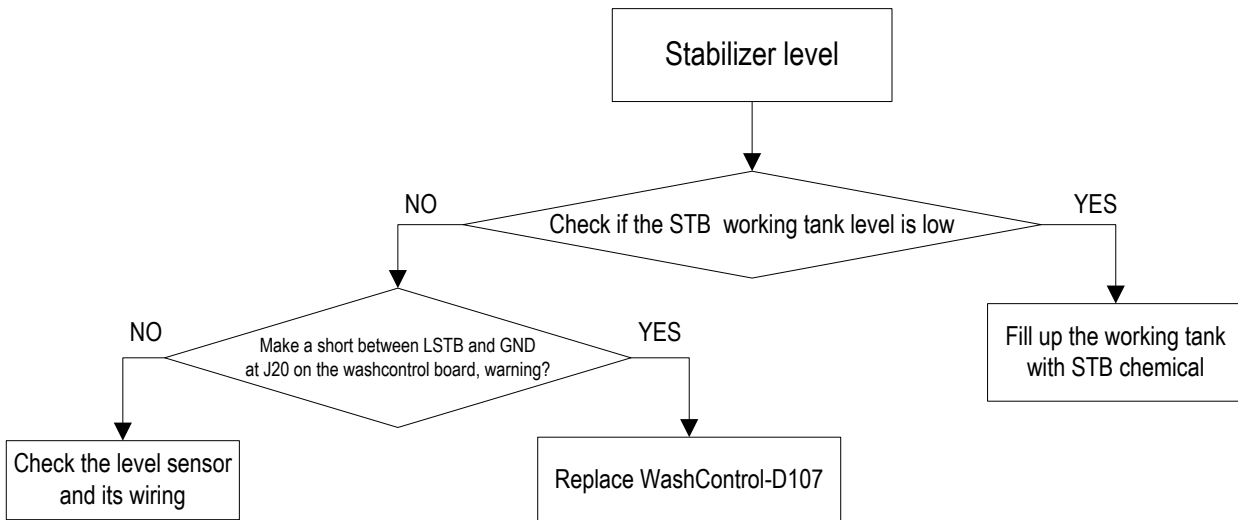


§ 1.2 Bleach level

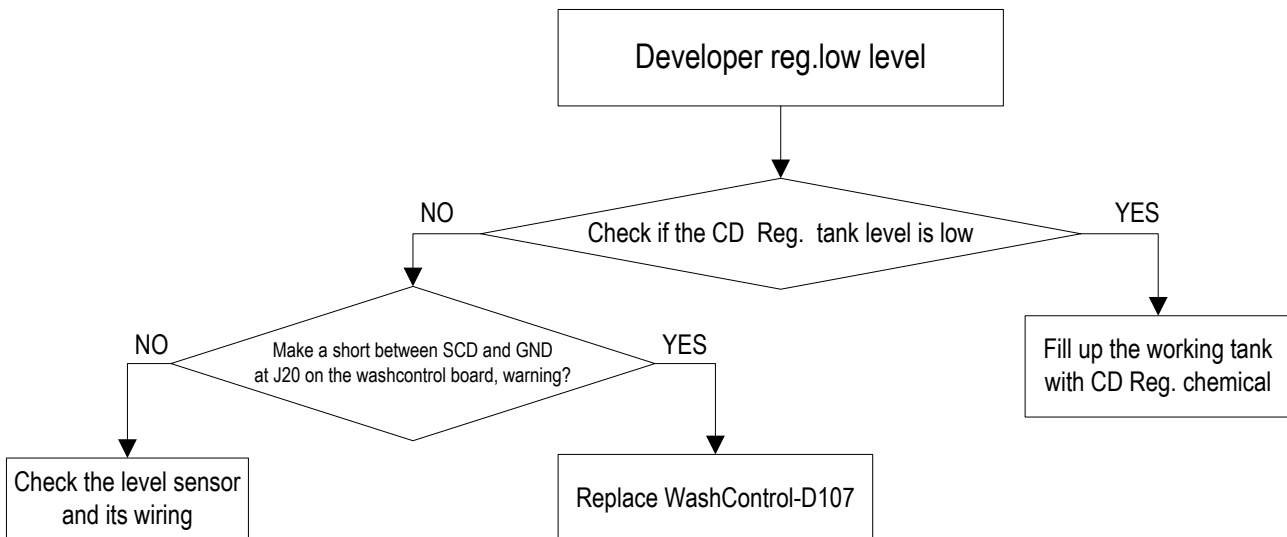




§ 1.3 Stabilizer level

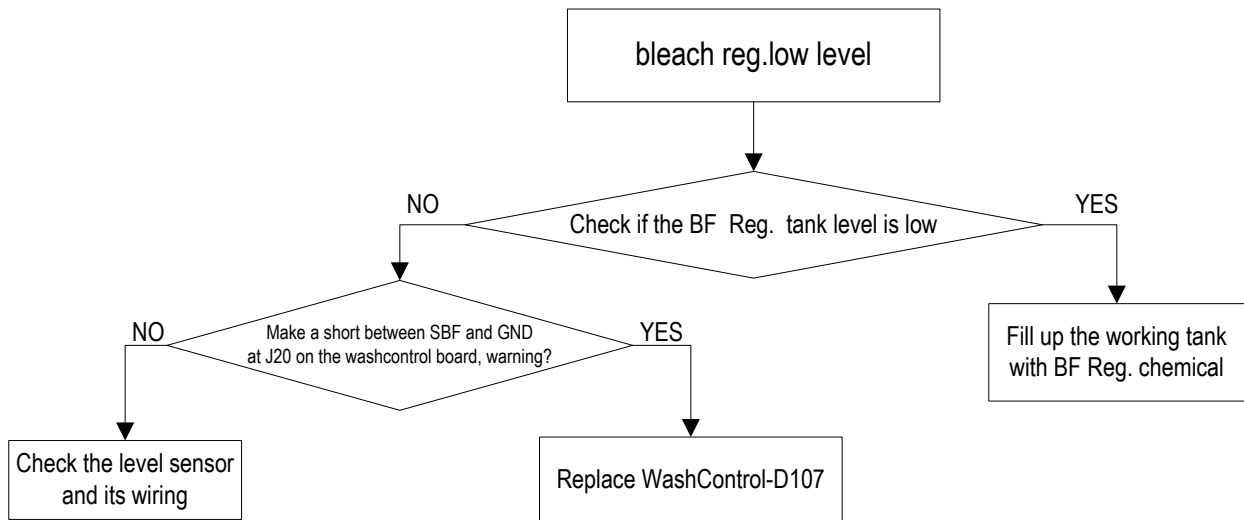


§ 1.4 Developer reg.low level

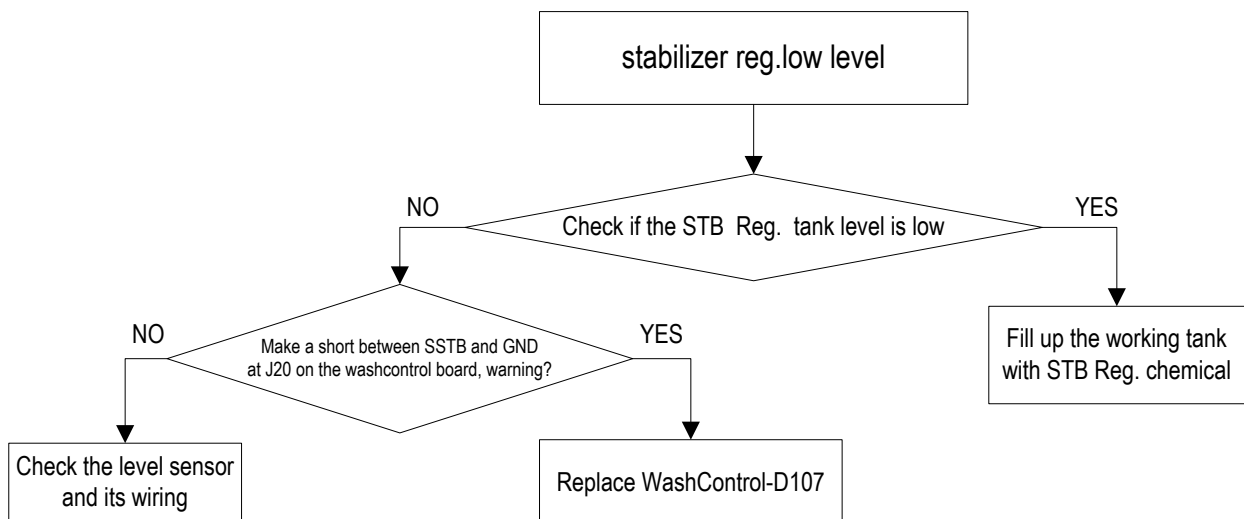




§ 1.5 Bleach reg.low level

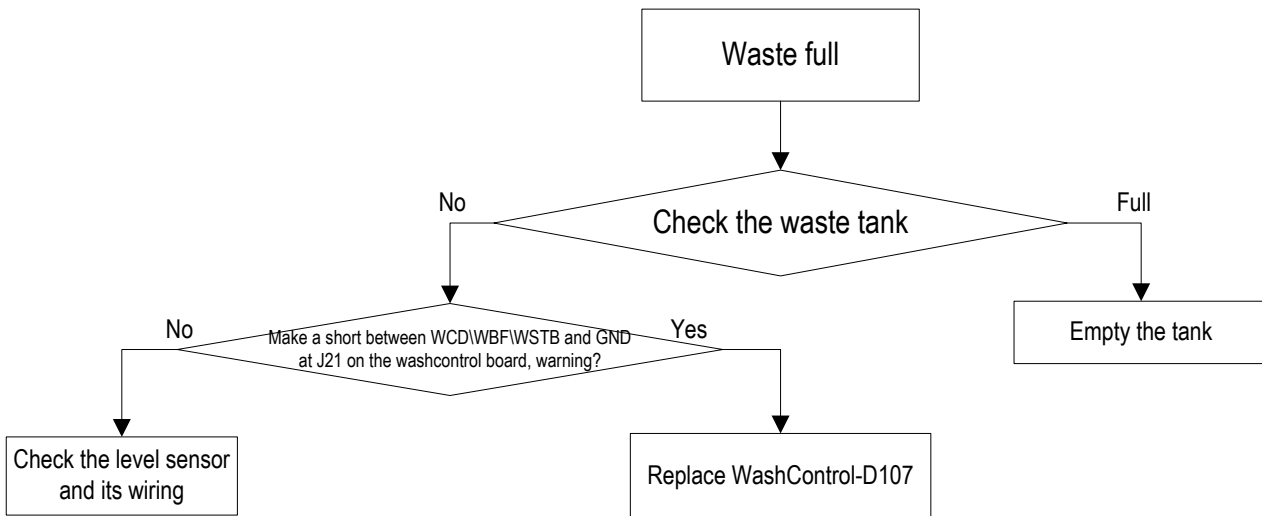


§ 1.6 Stabilizer reg.low level

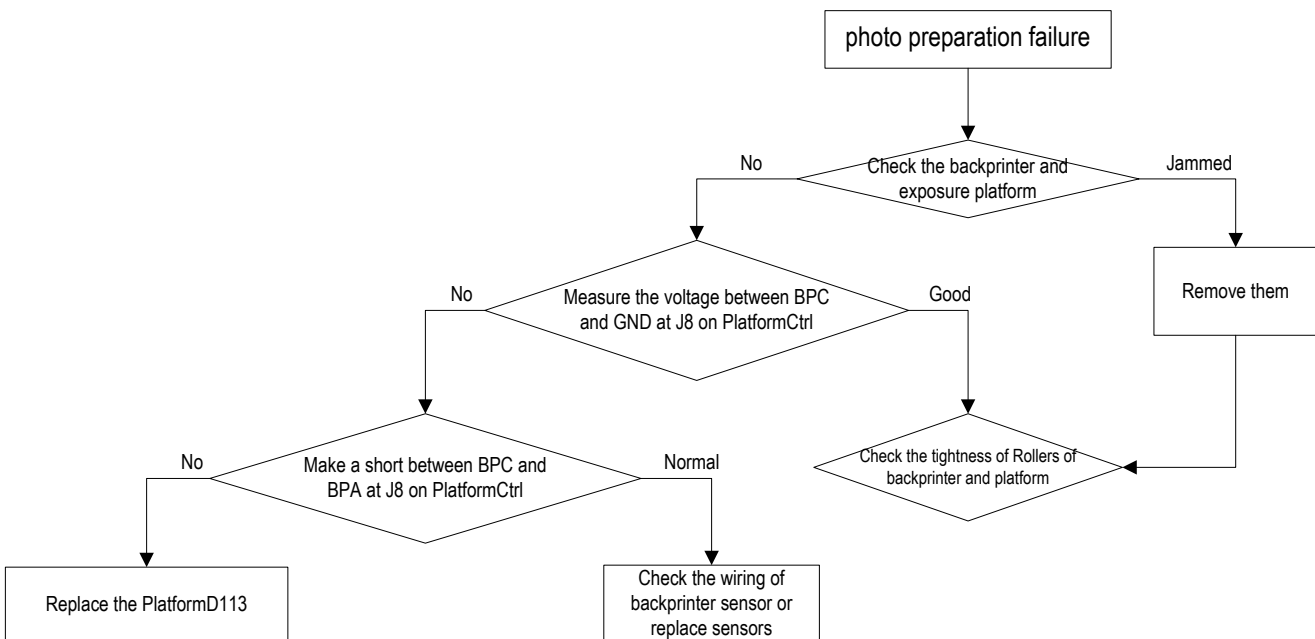




§ 1.7 Waste full



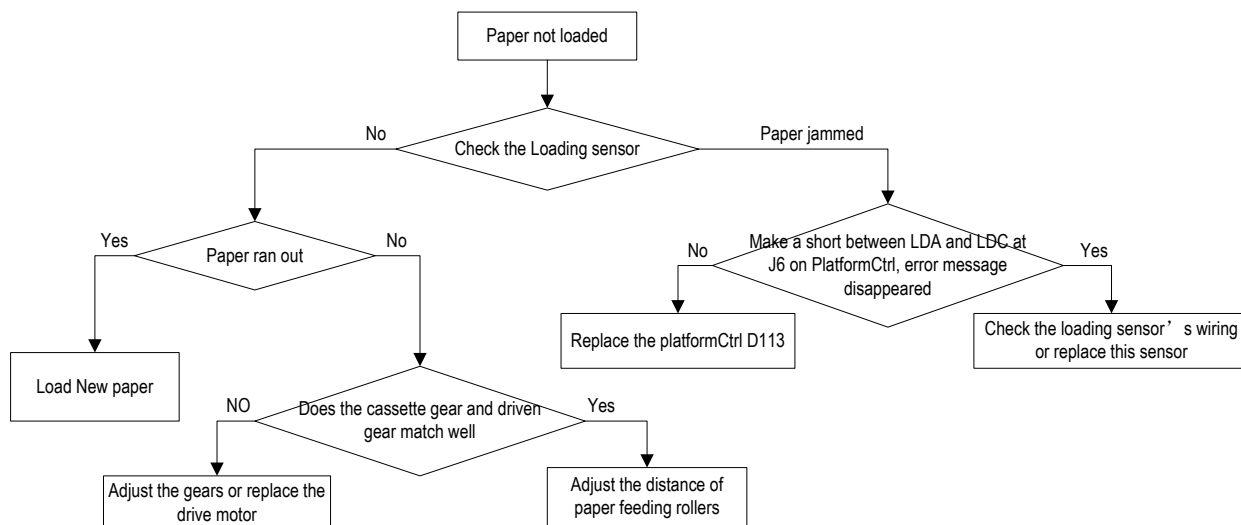
§ 1.8 Photo preparation failure



The voltage of BPC at J8 on platform board should be less than 1.0v (without paper), more than 4.0v (with paper)

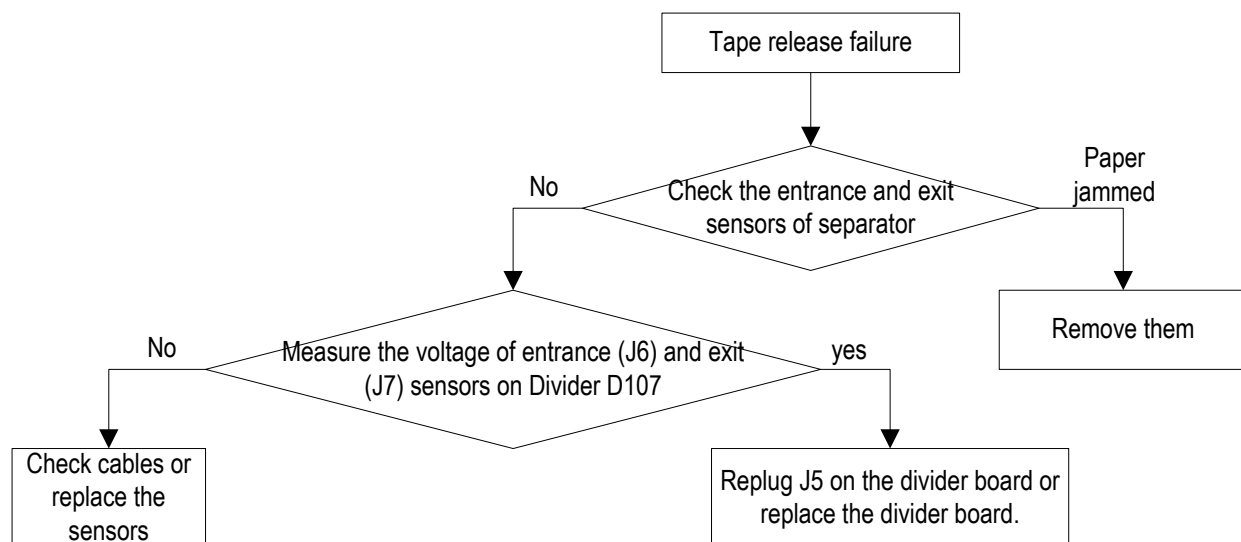


§ 1.9 paper not loaded



The voltage of LDC at J6 on platform board should be less than 1.0v (without paper), more than 4.0v (with paper)

§ 1.10 Tape release failure

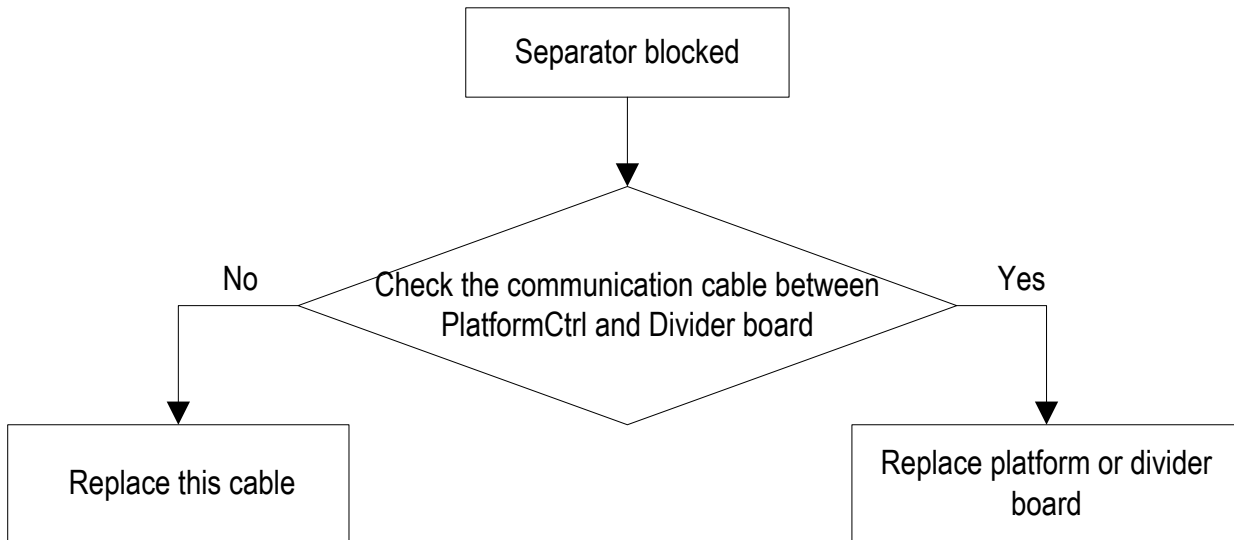


The voltage of separator's entrance\ exit at J6\ J7 should be more than 4.5v (with paper), less than 1.0 (without paper)

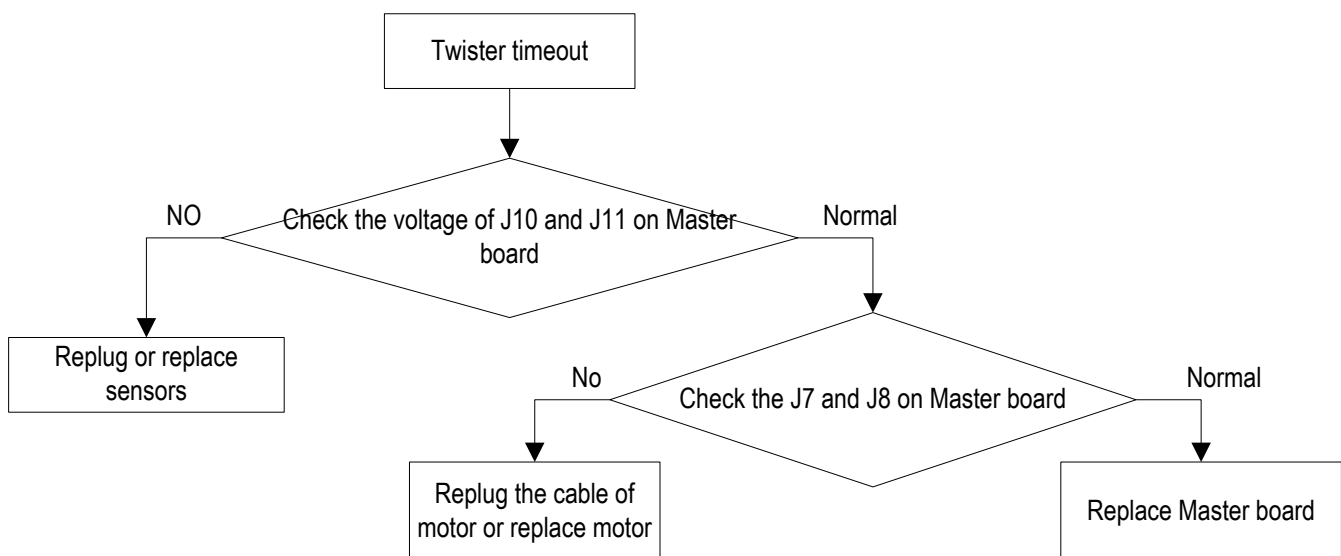




§ 1.11 Separator blocked



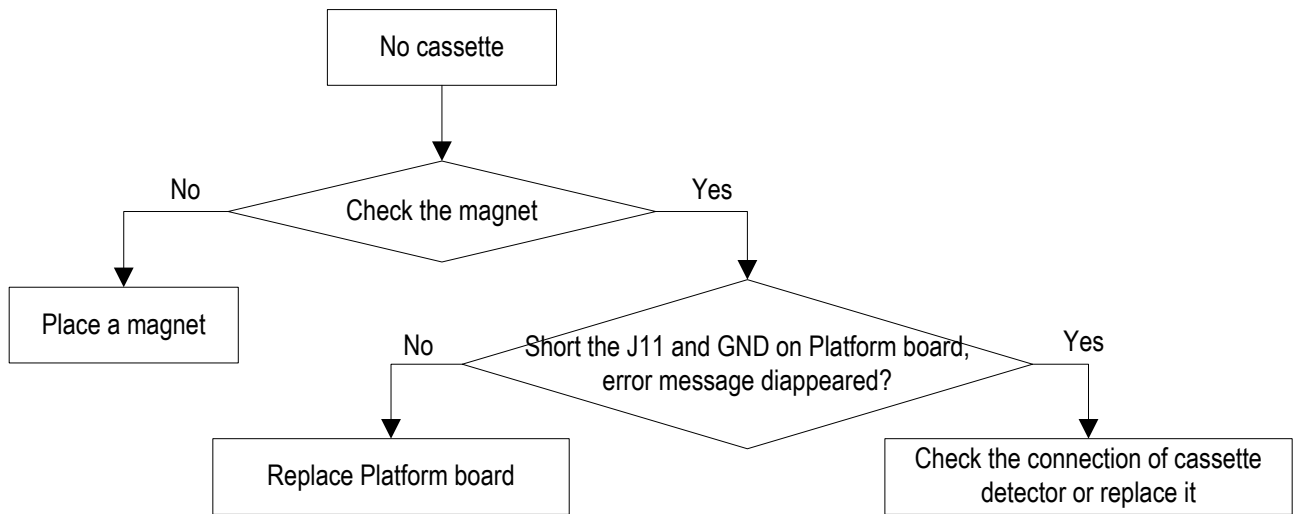
§ 1.12 Twister timeout



Check the middle cable at J7 and J8 for X\ Y twister sensor on master board, should be more than 4.5v when it's blocked, less than 1.0v when released.

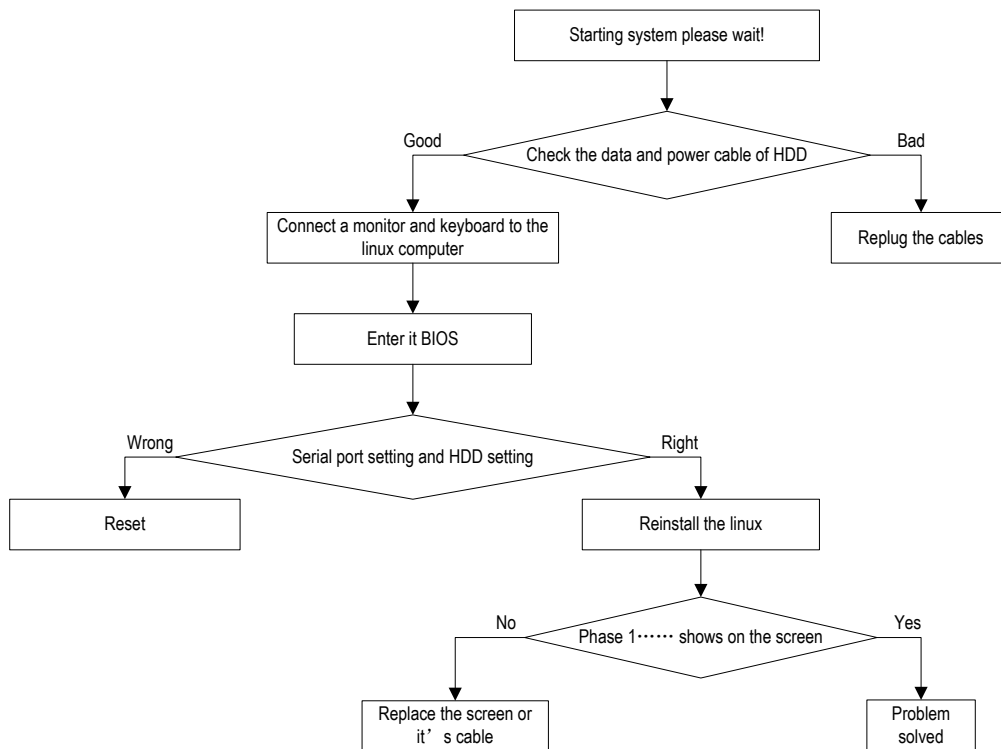


§ 1.13 No cassette



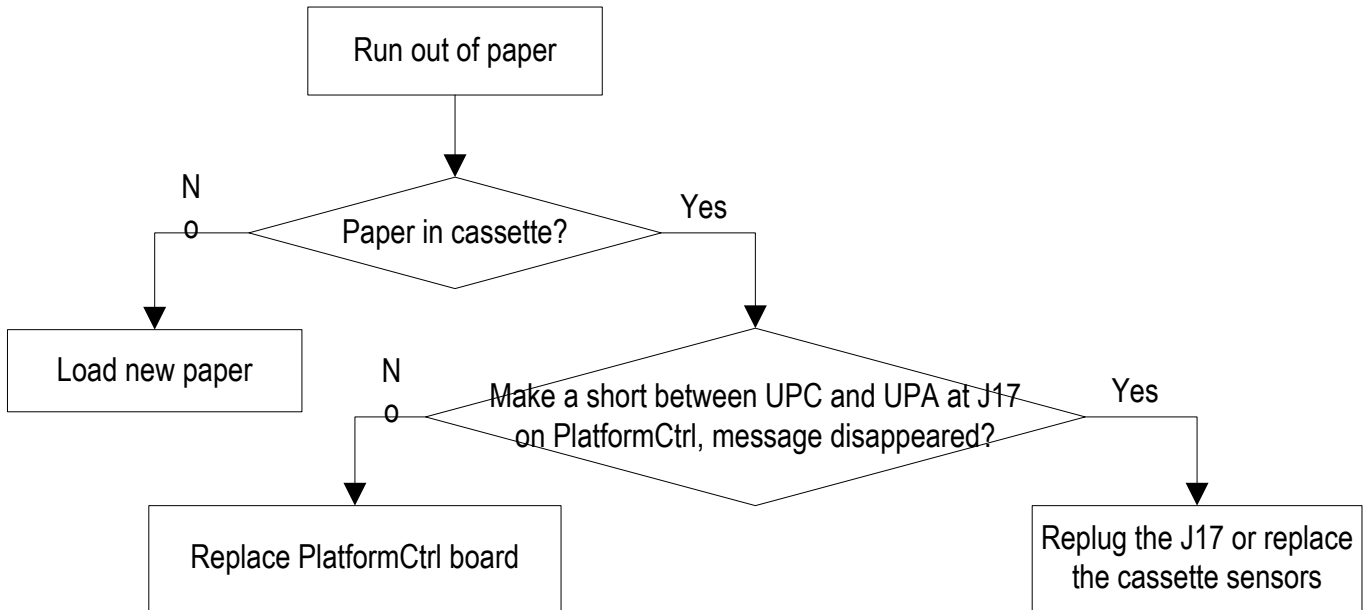
J11 is the cassette detector of upper, J10 is lower

§ 1.14 Starting system please wait!



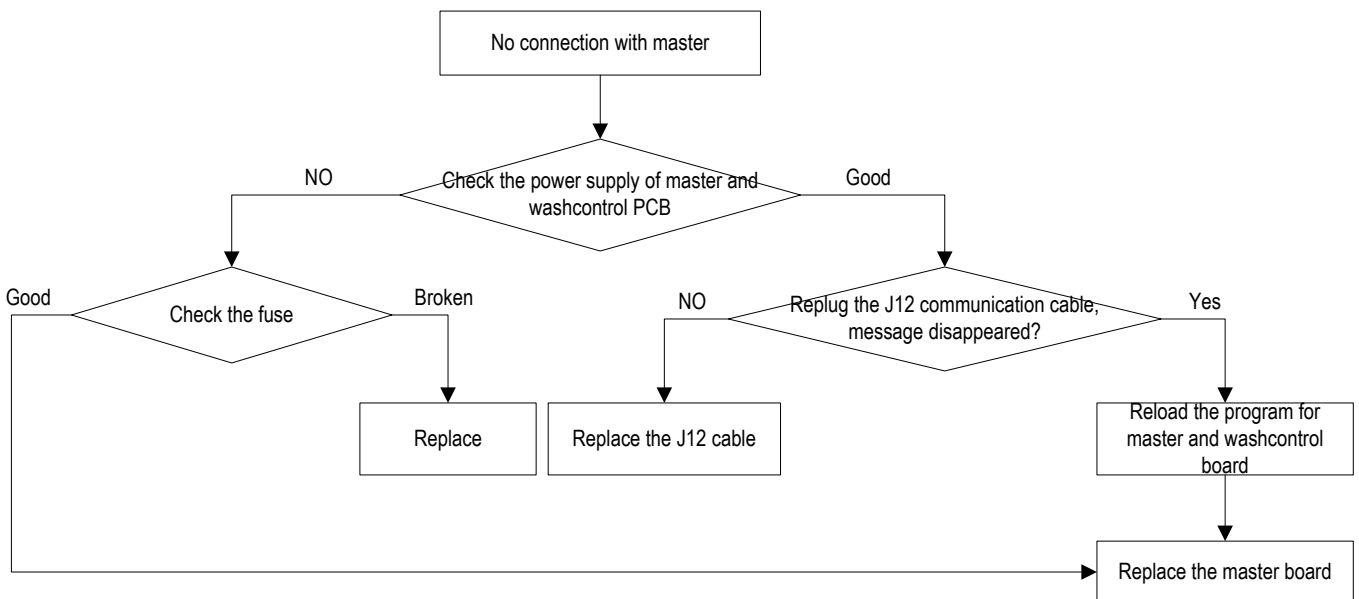


§ 1.15 Run out of paper



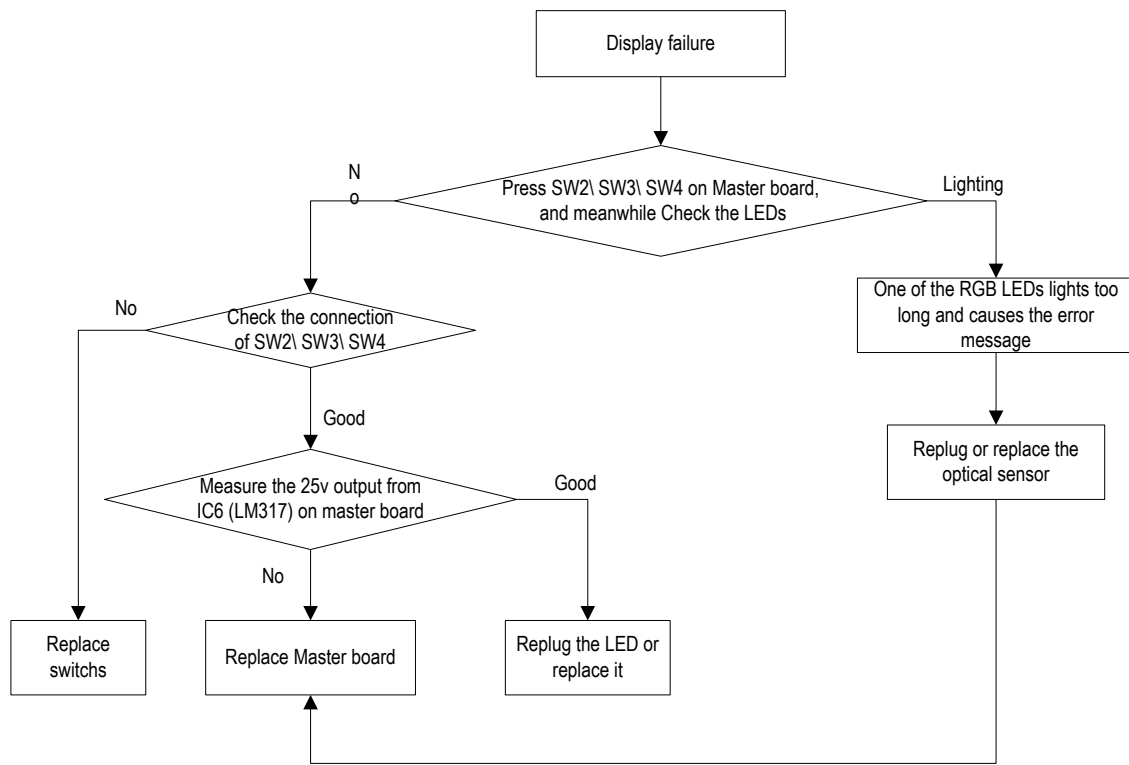
Measure the voltage between UPC and UPA on J17 for upper cassette, should be more than 4.5v with paper, less than 1.0v without paper, The same to lower cassette between DPC and DPA

§ 1.16 No connection with master

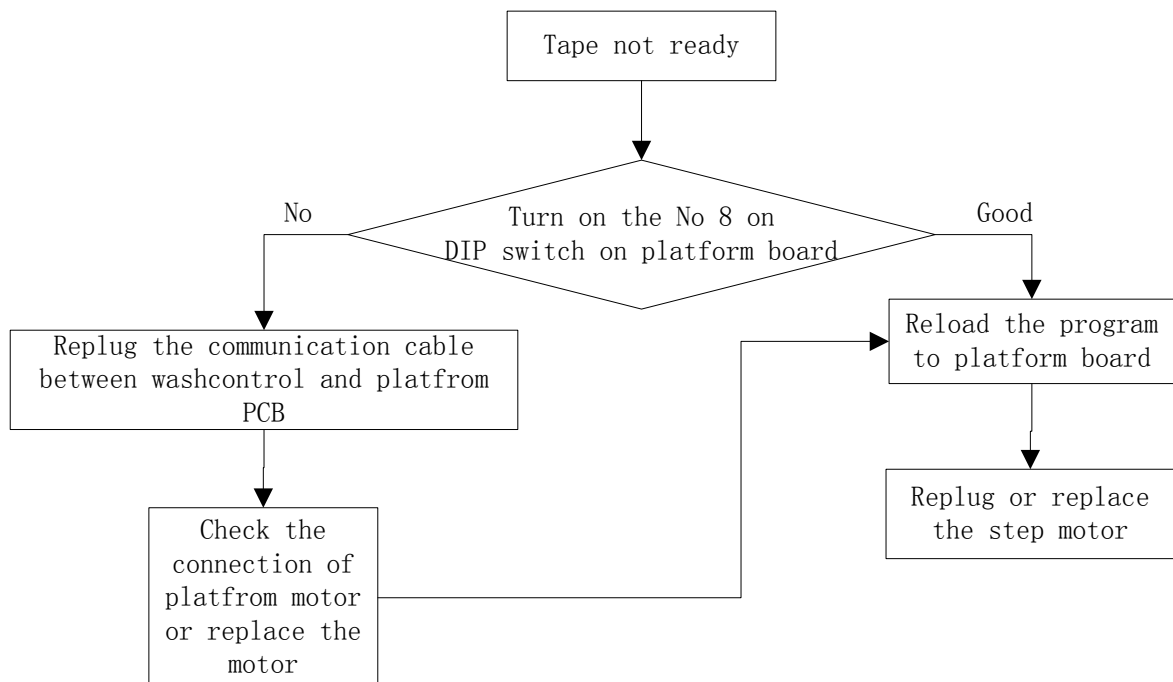




§ 1.17 Display failure

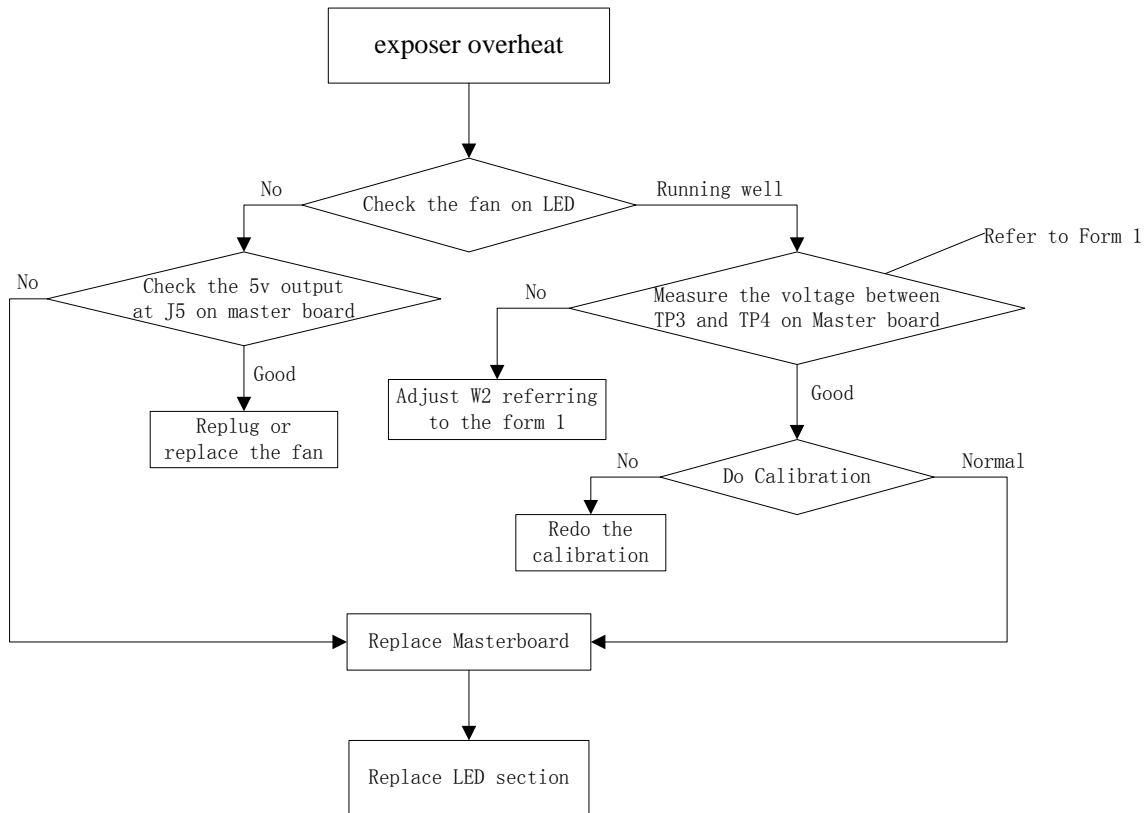


§ 1.18 Tape not ready





§ 1.19 Exposure overheat

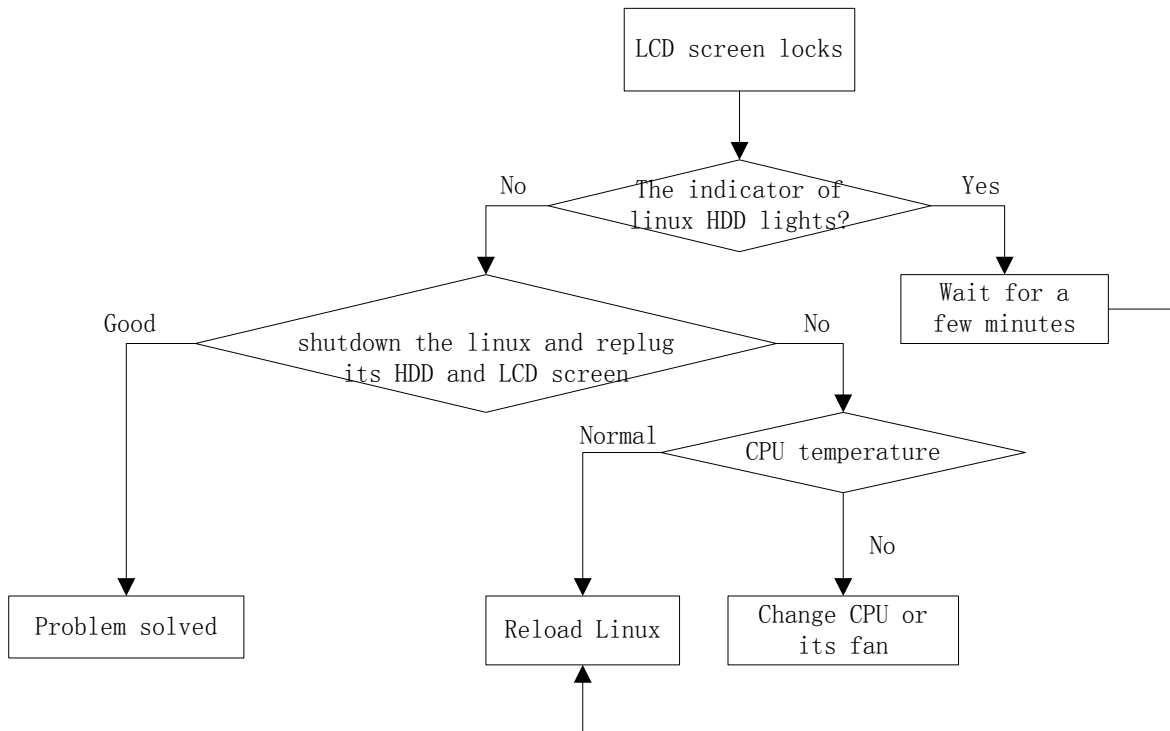


Form 1 :

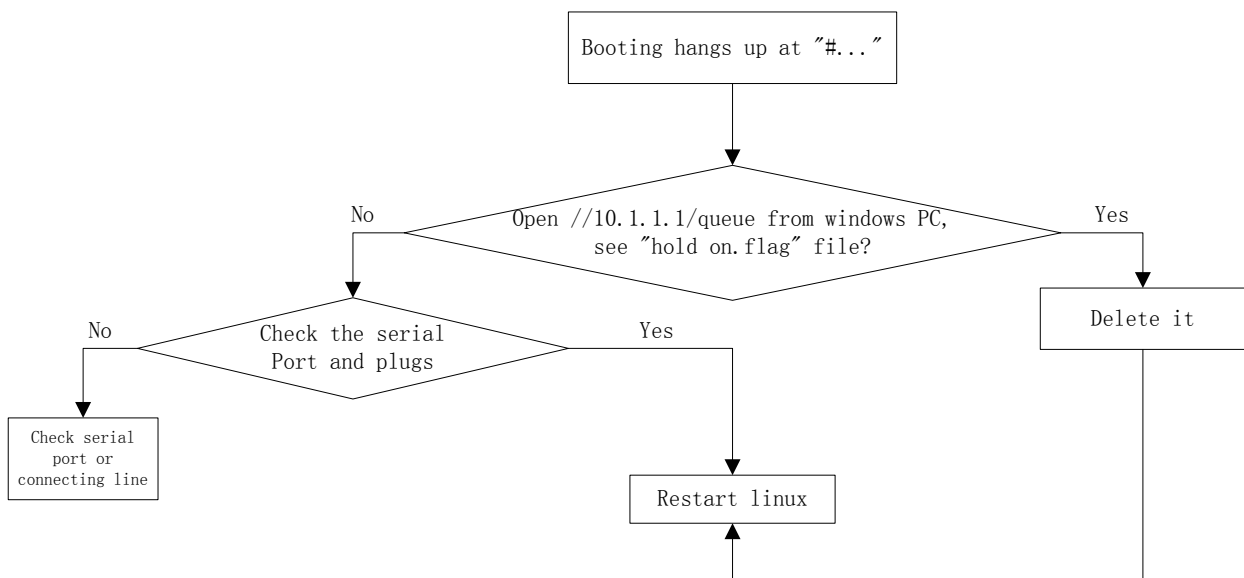
Room temperature (°C)	Voltage between TP3 and TP4 (V)
15	0.91
16	0.9
17	0.88
18	0.87
19	0.85
20	0.83
21	0.82
22	0.8
23	0.78
24	0.77
25	0.75
26	0.73
27	0.71
28	0.69
29	0.68
30	0.66



§ 1.20 LCD displayer blocks



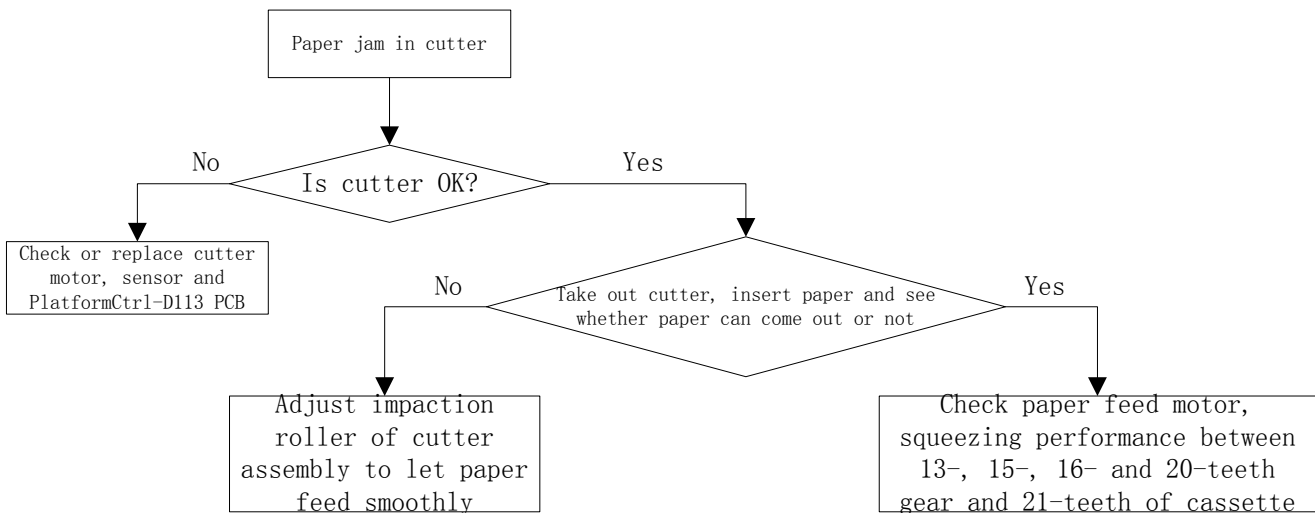
§ 1.21 Linux system loading stops at “#...”



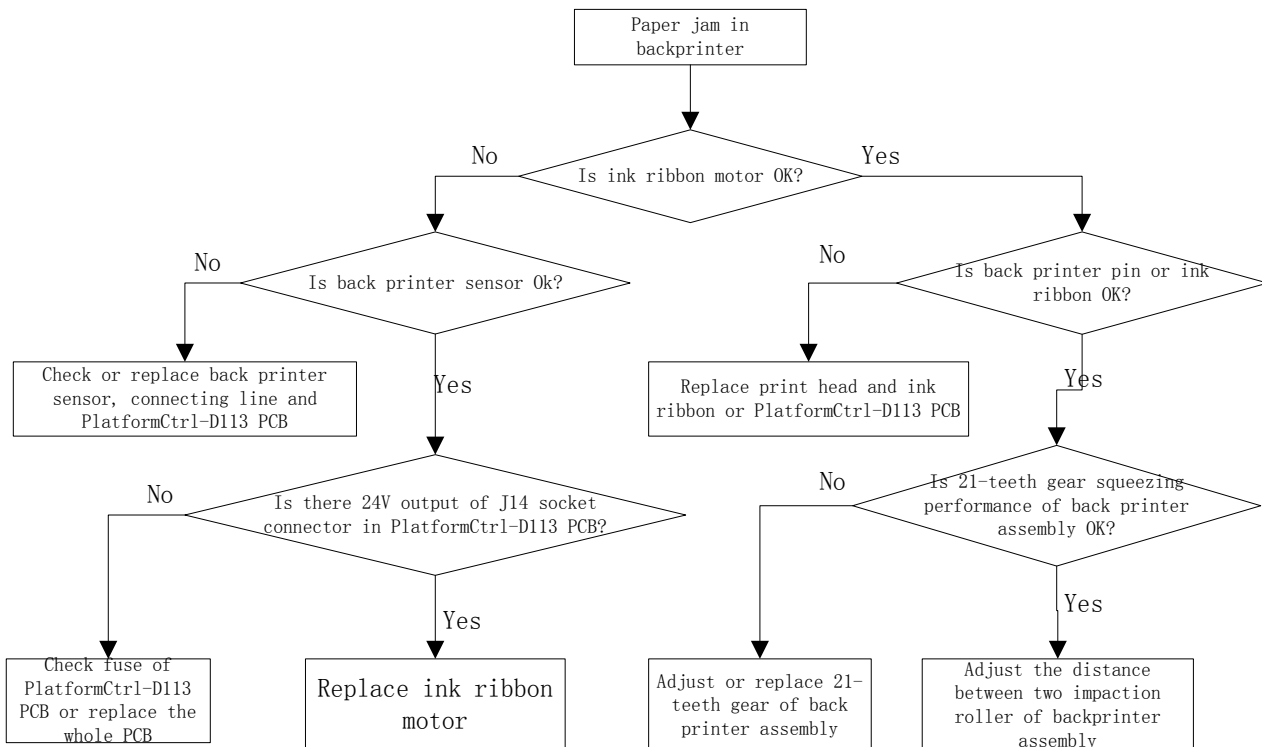


Chapter 2 Mechanical failure

§ 2.1 Paper jam at cutter section

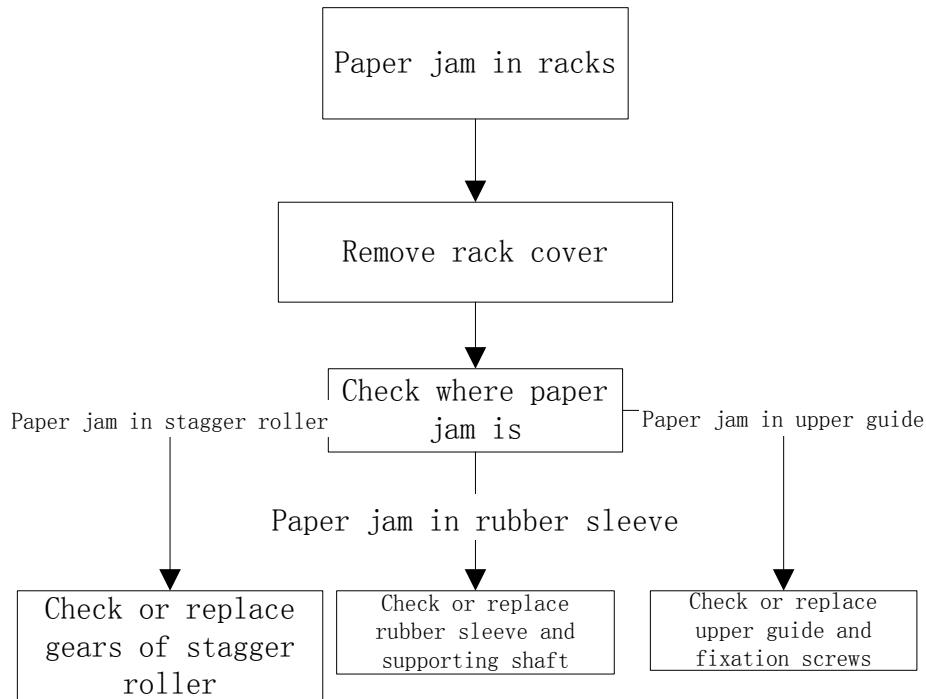


§ 2.2 Paper jam at backprinter section

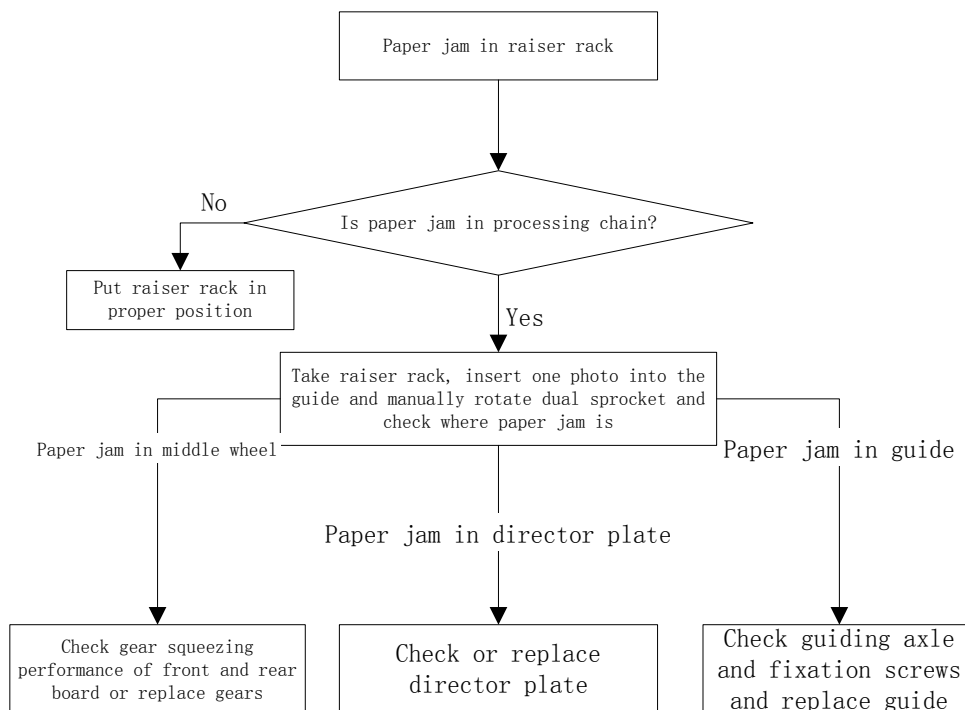




§ 2.3 Paper jam in raiser rack

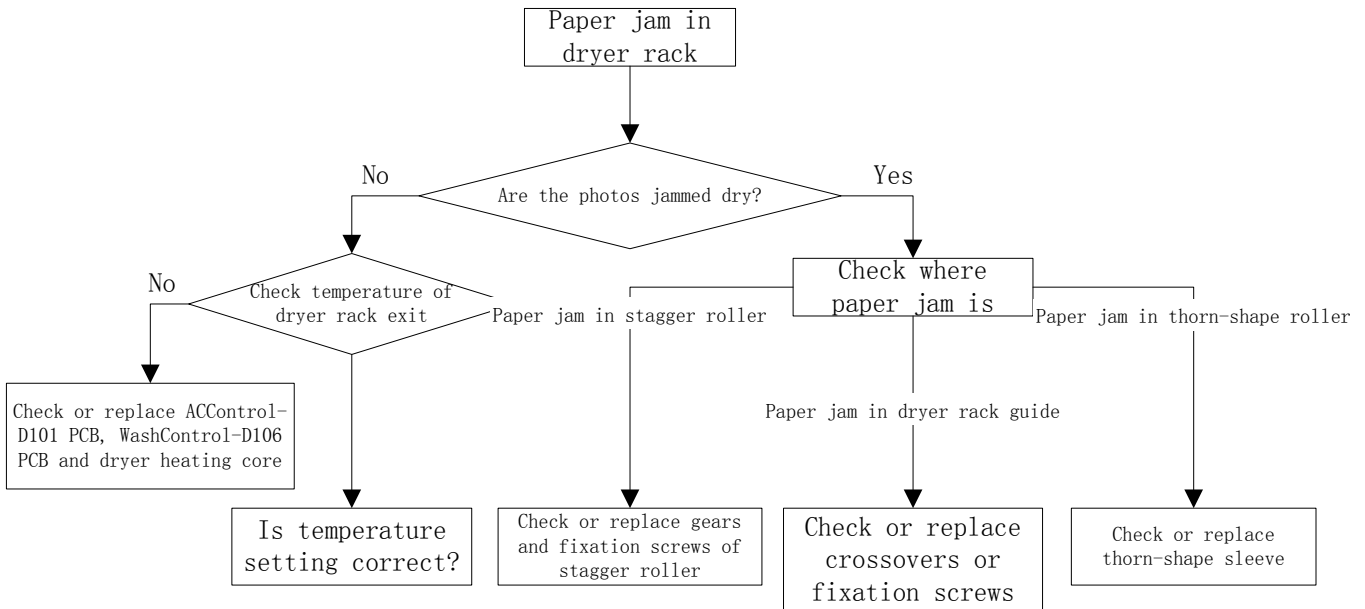


§ 2.4 Paper jam in racks

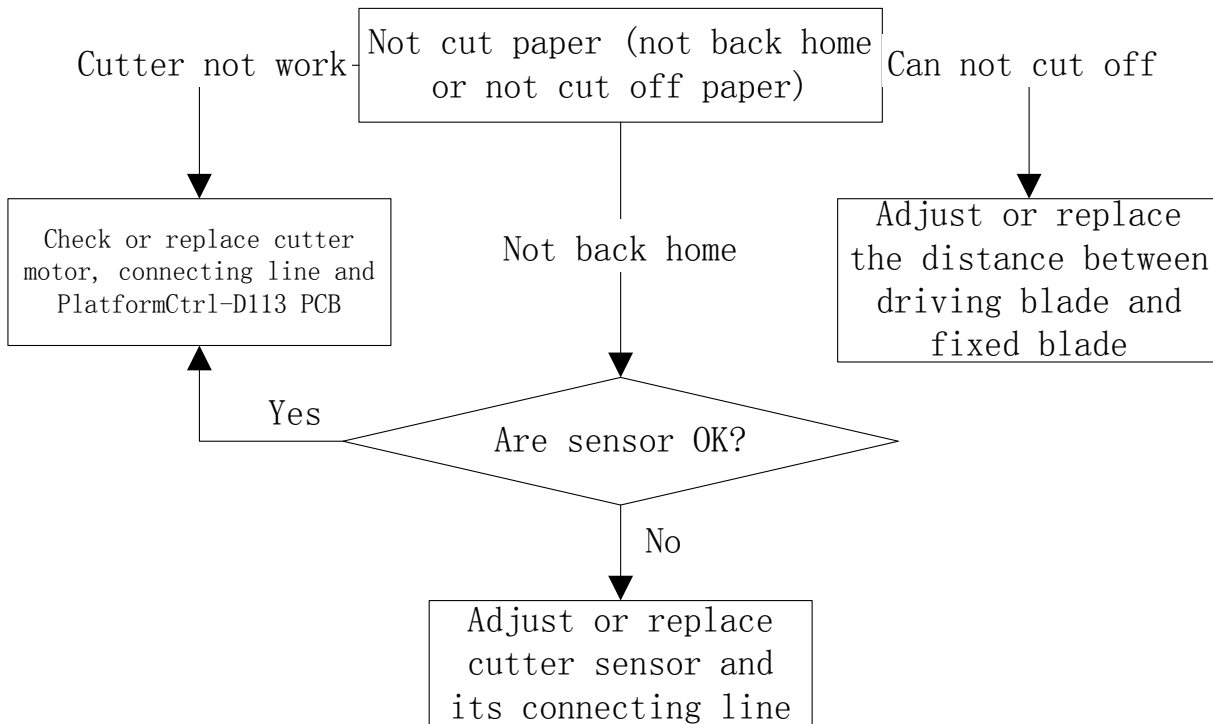




§ 2.5 Paper jam in dryer rack

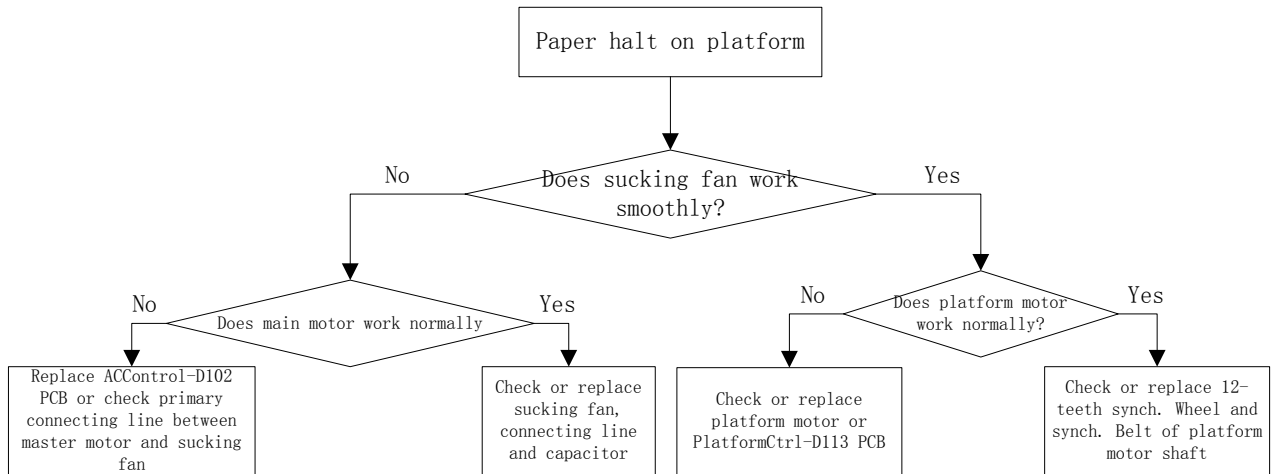


§ 2.6 Cutter doesn't work normally



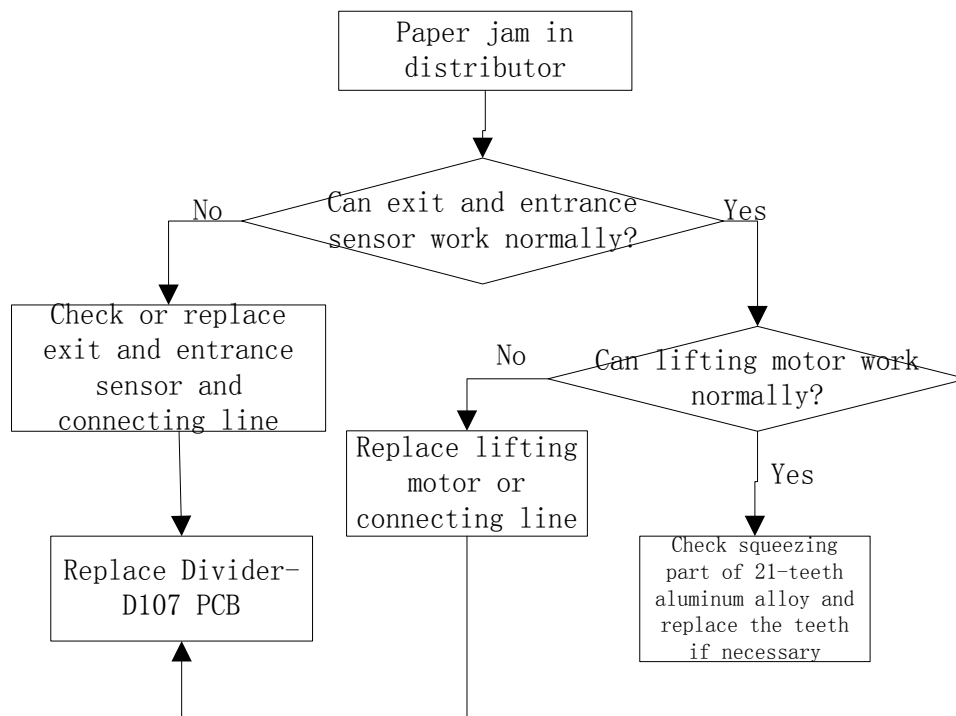


§ 2.7 Paper stay on the platform



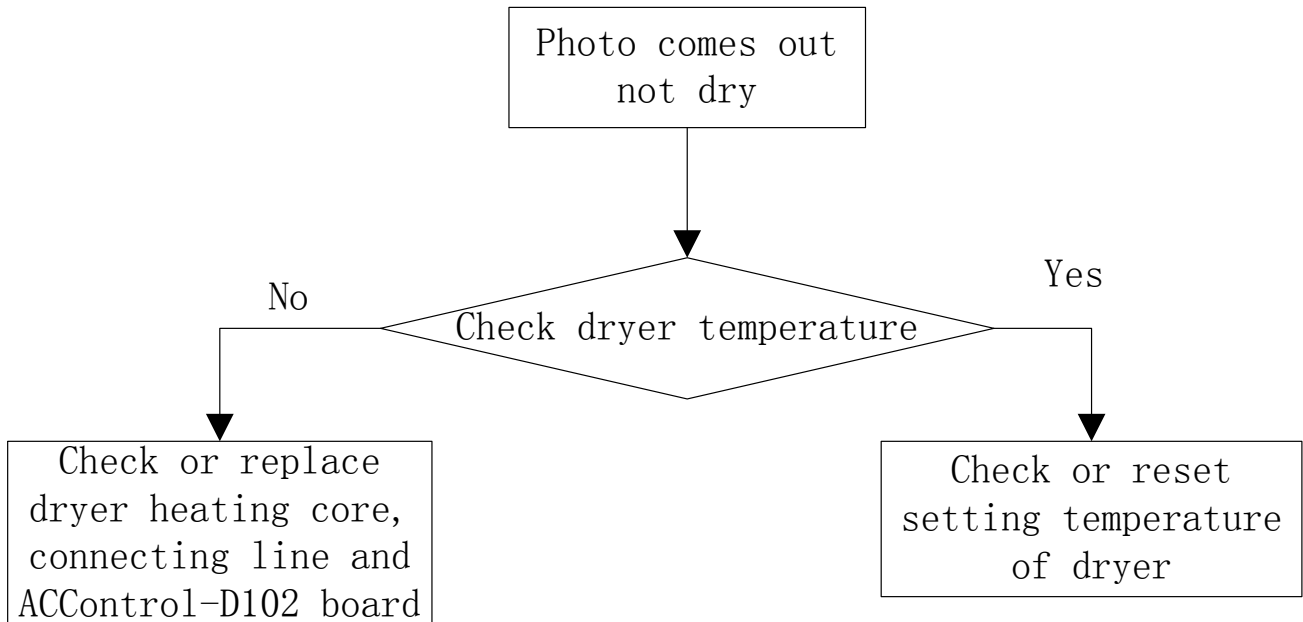
Check the error message on the LCD displayer.

§ 2.8 Paper jam in divider



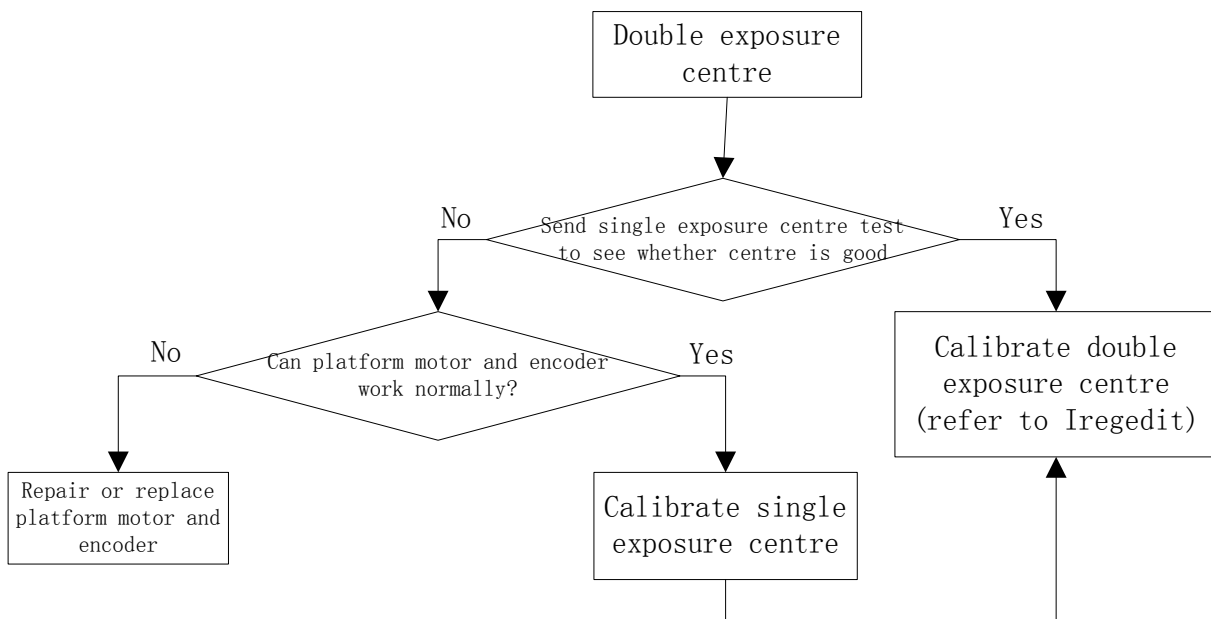


§ 2.9 Photo come out not dry



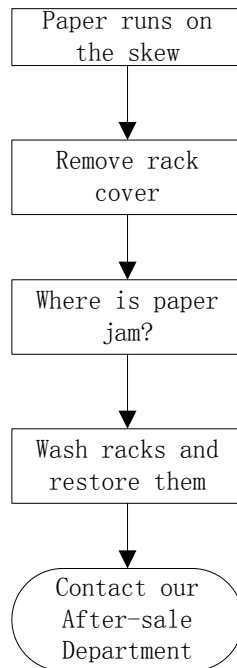
The start to work while the chemical temperatures ready

§ 2.10 Photo out of center and couldn't be corrected by cassette offset



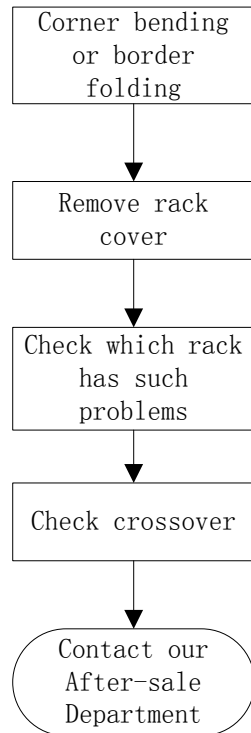


§ 2.11 Photo come out not straight

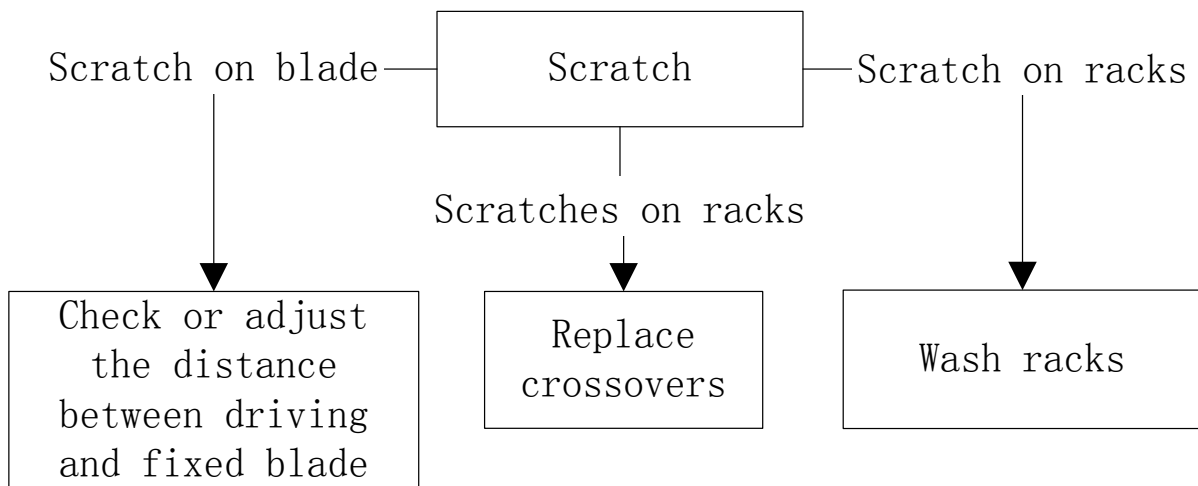




§ 2.12 Photo corner bending

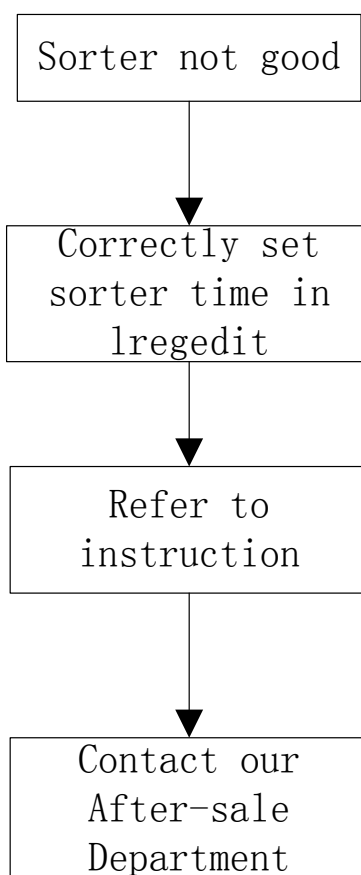


§ 2.13 Photo scratch





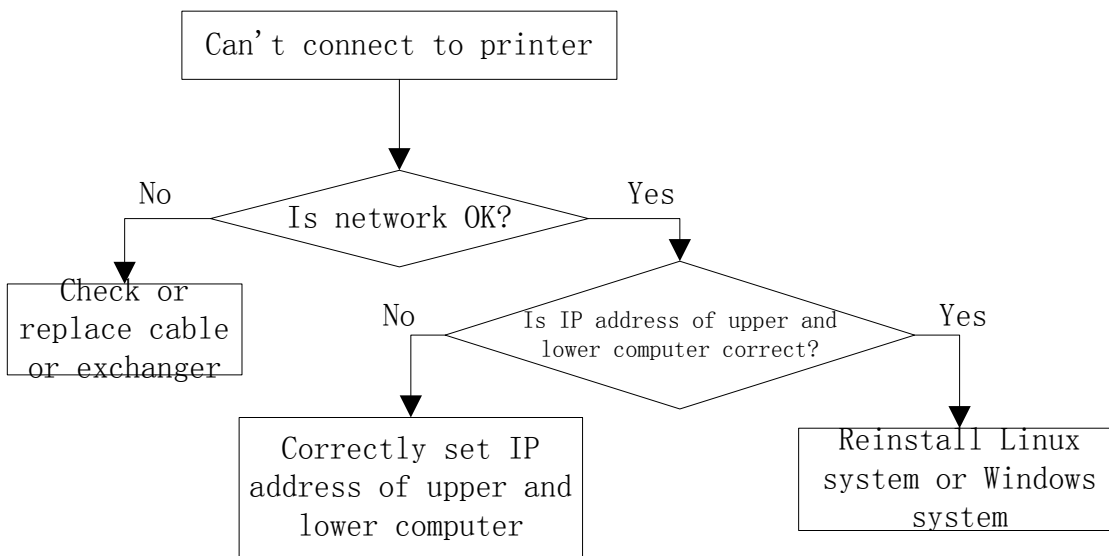
§ 2.14 Sorter doesn't sort photo on time



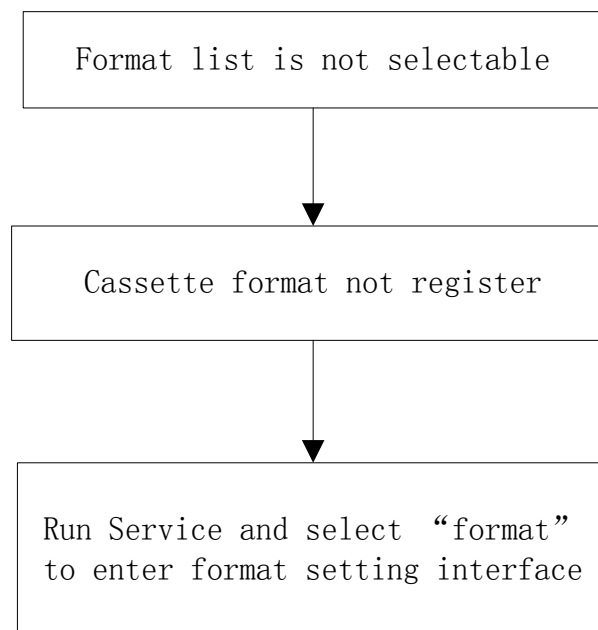


Chapter 3 Software failure

§ 3.1 Can't connect to printer

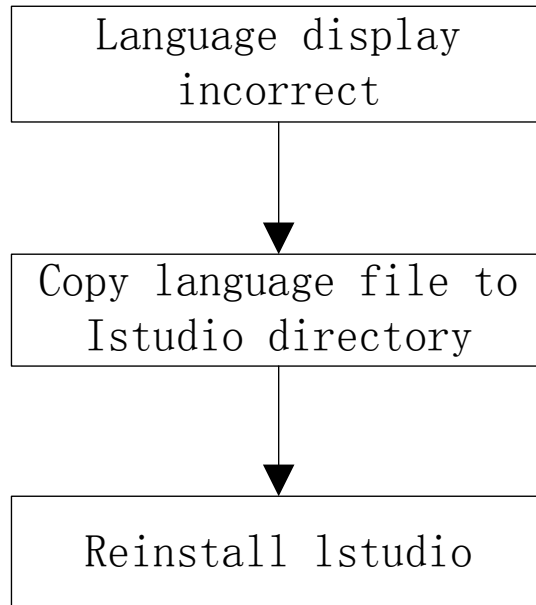


§ 3.2 format list is not selectable

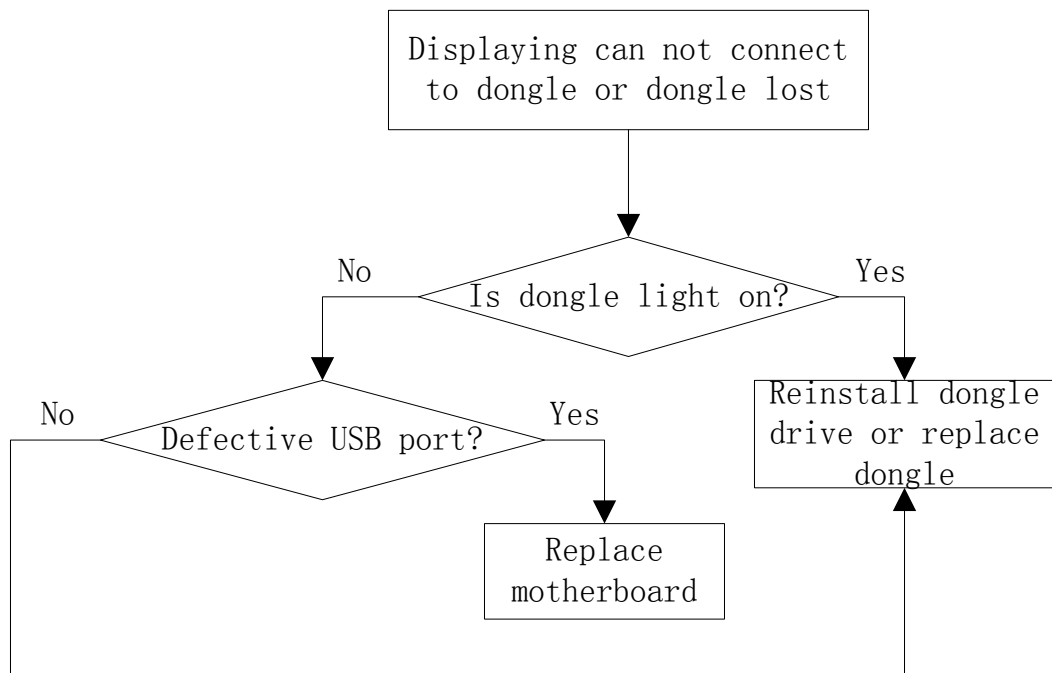




§ 3.3 Language displays abnormal

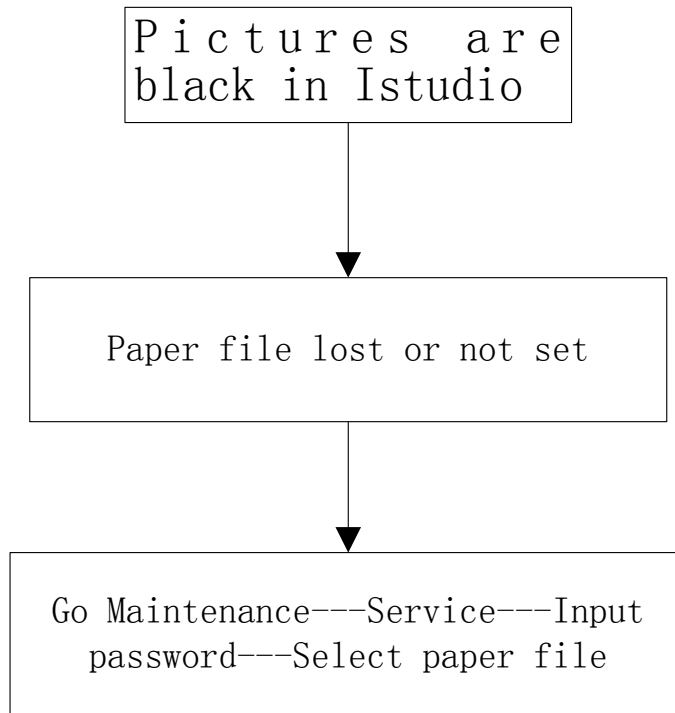


§ 3.4 Hasp not found

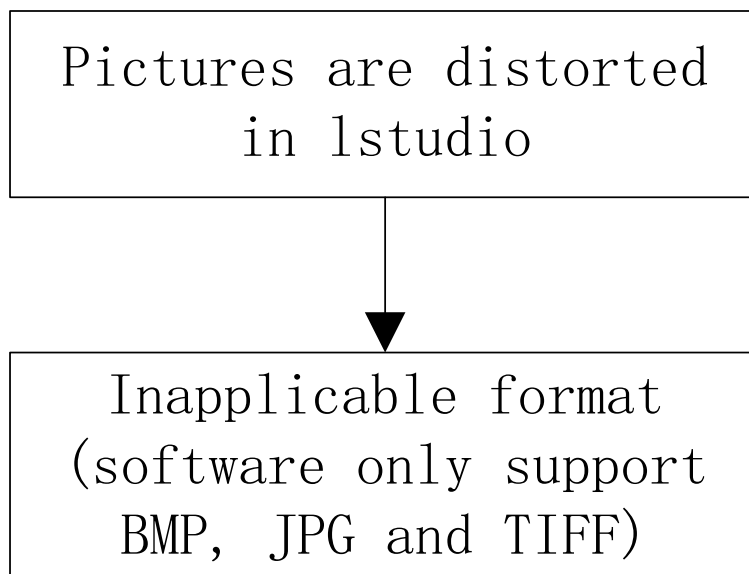




§ 3.5 Pictures are black in Istudio

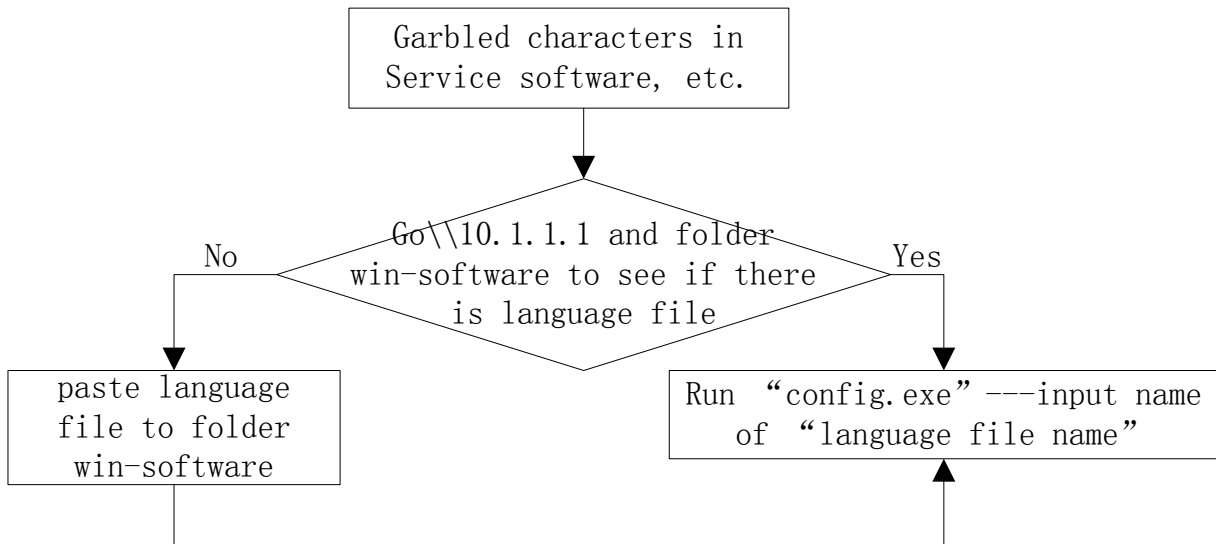


§ 3.6 Pictures are distorted in Istudio

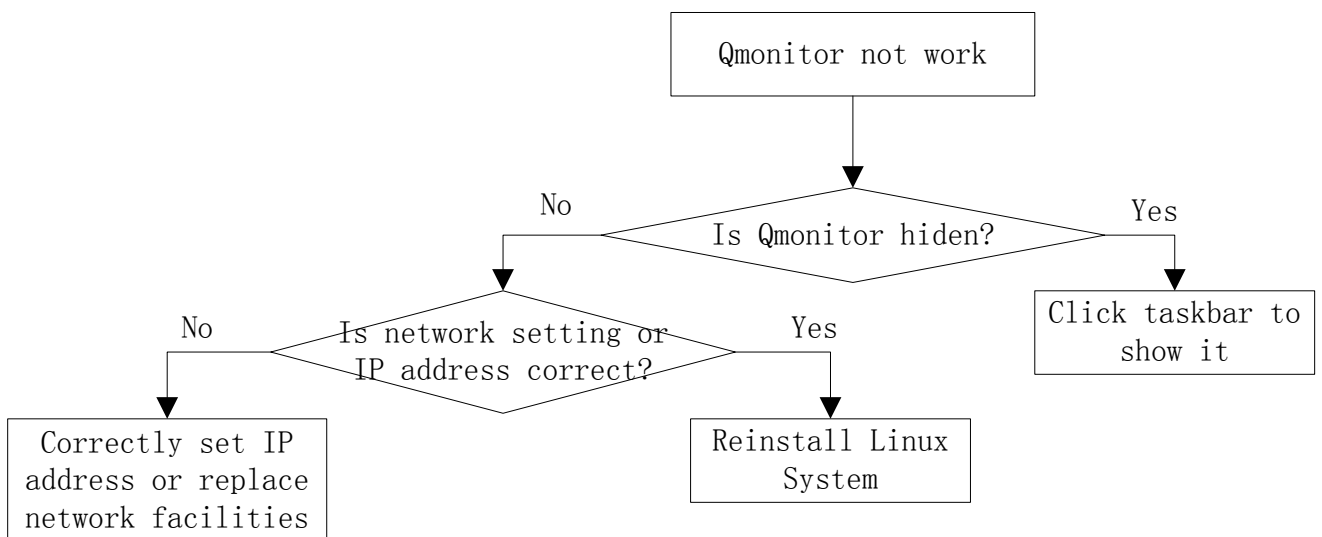




§ 3.7 Language error in maintenance software etc.

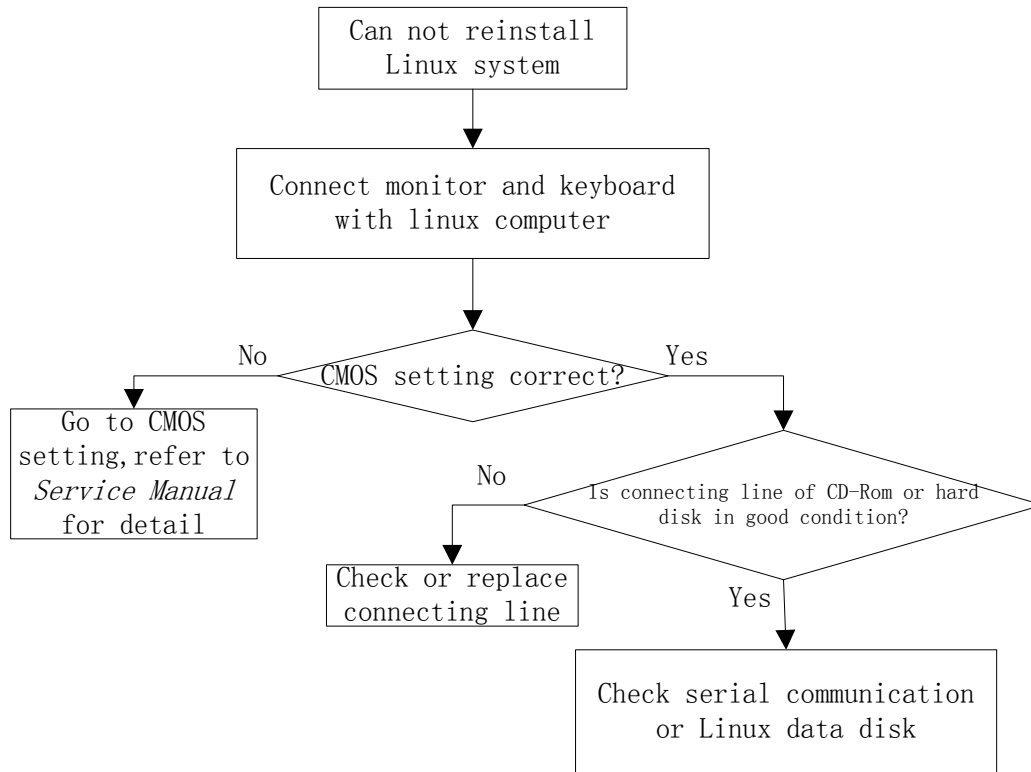


§ 3.8 Qmonitor software cannot be run

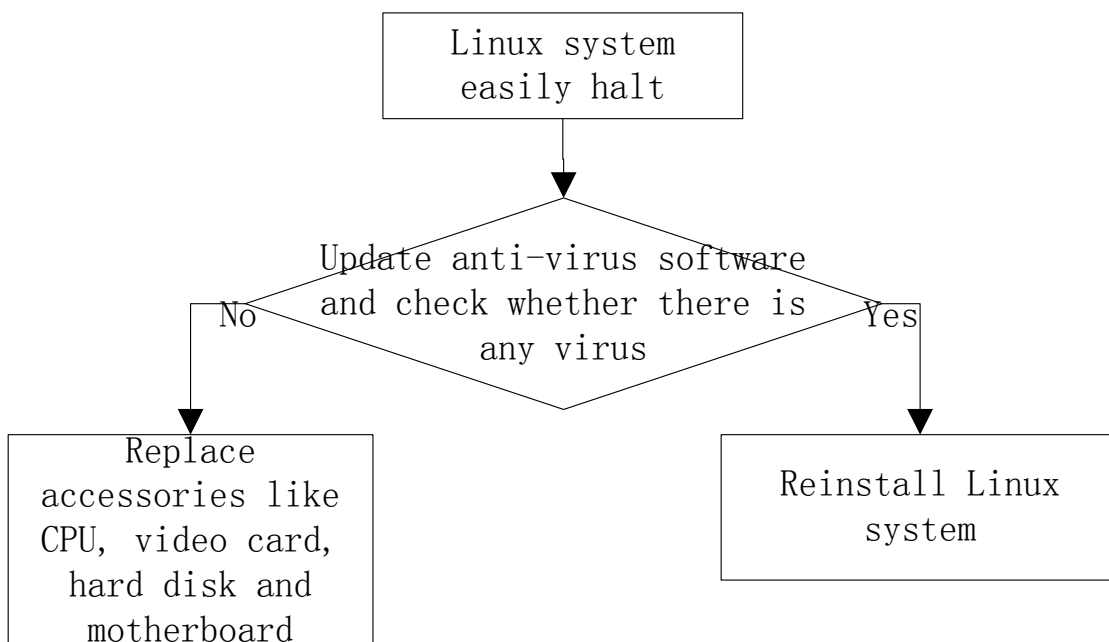




§ 3.9 Fail to make linux restoration

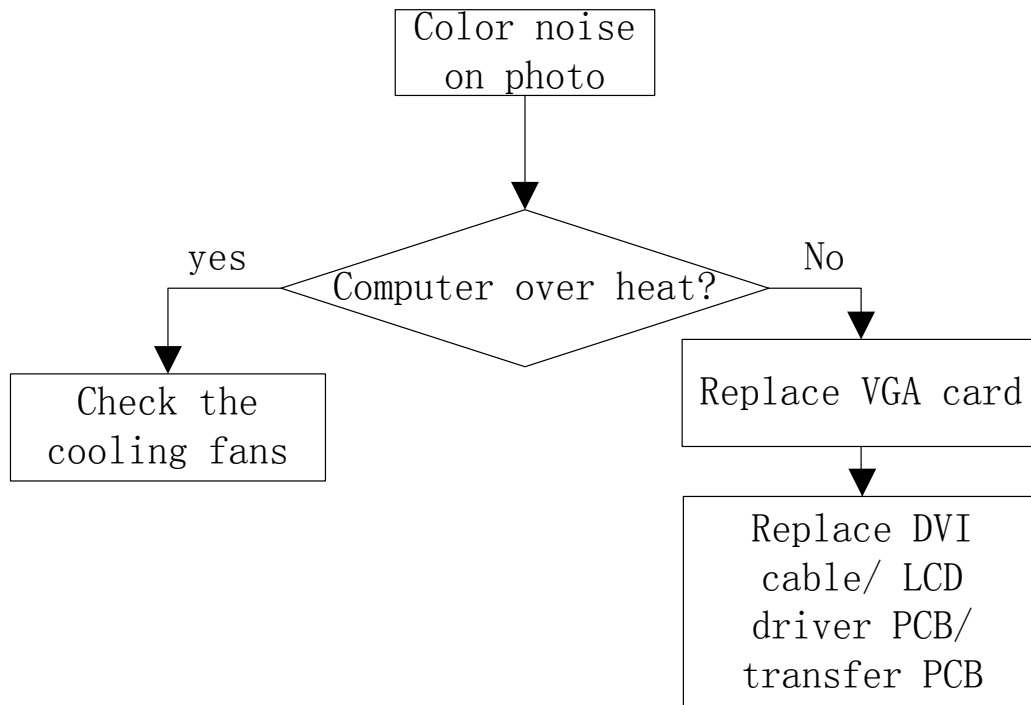


§ 3.10 Linux freezes frequently

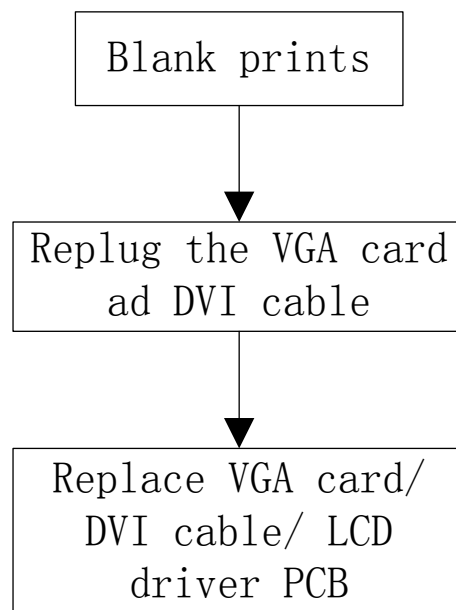




§ 3.11 Photo full of color noise

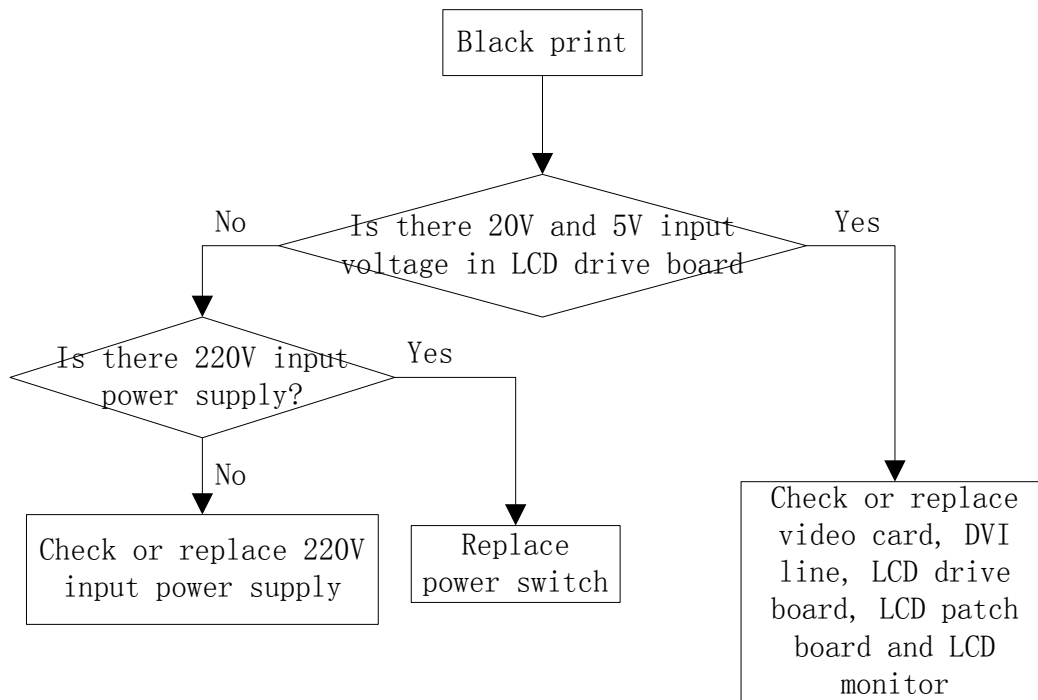


§ 3.12 Blank prints





§ 3.13 Black print



§ 3.14 Printing hanging up

